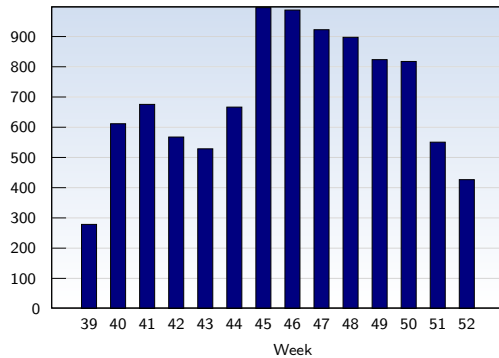


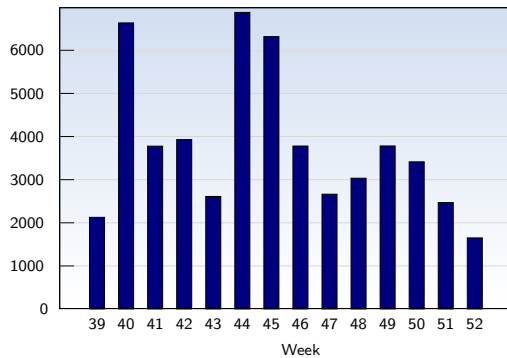
Unique Visits



This analysis summarizes multiple page impressions of an individual visitor into unique visits. A visitor is counted as an unique visit when requesting at least one page. If more than 30 minutes have elapsed since the first page impression, further requests will be counted as a new unique visit.

Date	Amount	
Week 39	10/01/08-10/04/08	279
Week 40	10/05/08-10/11/08	612
Week 41	10/12/08-10/18/08	676
Week 42	10/19/08-10/25/08	568
Week 43	10/26/08-11/01/08	529
Week 44	11/02/08-11/08/08	667
Week 45	11/09/08-11/15/08	996
Week 46	11/16/08-11/22/08	988
Week 47	11/23/08-11/29/08	923
Week 48	11/30/08-12/06/08	898
Week 49	12/07/08-12/13/08	824
Week 50	12/14/08-12/20/08	818
Week 51	12/21/08-12/27/08	551
Week 52	12/28/08-12/31/08	427
Total		9756

Page Views

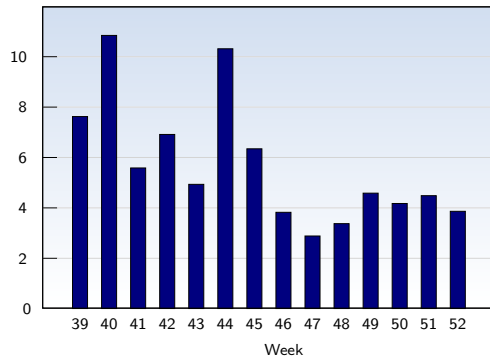


These statistics show all successful page views (also known as page impressions) and the time they were made. Only fully loaded pages are counted. Individual images and components are not included.

Date	Amount	
Week 39	10/01/08-10/04/08	2130
Week 40	10/05/08-10/11/08	6638
Week 41	10/12/08-10/18/08	3780
Week 42	10/19/08-10/25/08	3932
Week 43	10/26/08-11/01/08	2614
Week 44	11/02/08-11/08/08	6881
Week 45	11/09/08-11/15/08	6320
Week 46	11/16/08-11/22/08	3783
Week 47	11/23/08-11/29/08	2666
Week 48	11/30/08-12/06/08	3037
Week 49	12/07/08-12/13/08	3785
Week 50	12/14/08-12/20/08	3417
Week 51	12/21/08-12/27/08	2472
Week 52	12/28/08-12/31/08	1653
Total		53108



Pages per Visit

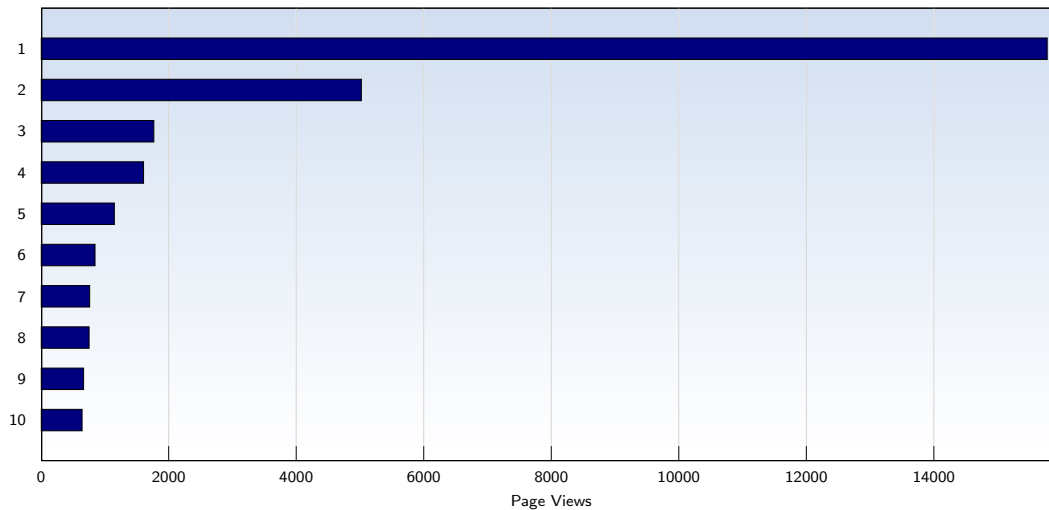


The average number of pages opened per unique visit. Only fully loaded pages are counted.

Date	Amount
Week 39 10/01/08-10/04/08	7.63
Week 40 10/05/08-10/11/08	10.85
Week 41 10/12/08-10/18/08	5.59
Week 42 10/19/08-10/25/08	6.92
Week 43 10/26/08-11/01/08	4.94
Week 44 11/02/08-11/08/08	10.32
Week 45 11/09/08-11/15/08	6.35
Week 46 11/16/08-11/22/08	3.83
Week 47 11/23/08-11/29/08	2.89
Week 48 11/30/08-12/06/08	3.38
Week 49 12/07/08-12/13/08	4.59
Week 50 12/14/08-12/20/08	4.18
Week 51 12/21/08-12/27/08	4.49
Week 52 12/28/08-12/31/08	3.87
Average	5.44



Top 10 Popular Pages

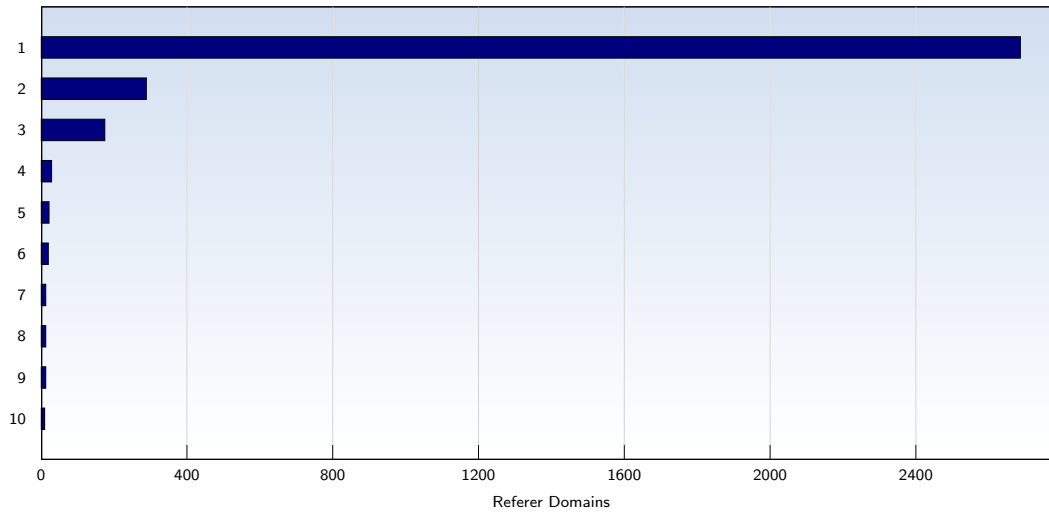


Rank	Page	Amount	%
1	photo.album.jaslo-pl.com/tinc?key=5qH3ZtXN	15779	29
2	pieczko.net/tinc?key=firBBeVZ	5024	9
3	agnieszka.pieczko.net/tinc?key=1GXdpK1A	1769	3
4	agnieszka.pieczko.net/tinc?key=uzBL4cZG	1608	3
5	karpacka-troja.info/tinc?key=OjJdnbVJ	1150	2
6	agnieszka.pieczko.net/tinc?key=uZH4NasX	847	1
7	karpacka-troja.info/1.html	763	1
8	agnieszka.pieczko.net/tinc?key=HwAFHU5z	754	1
9	agnieszka.pieczko.net/tinc?key=OzYLUX0M	668	1
10	karpacka-troja.info/tinc?key=NQL7w6i5	644	1
	Total	53108	

These statistics show you the most frequently called pages.



Top 10 Referer Domains



Rank	Domain	Amount	%
1	google.pl	2687	27
2	google.com	289	2
3	live.com	175	1
4	karpacka-troja.info	29	0
5	pieczko.net	22	0
6	keywordspy.com	20	0
7	jaslo.pl	13	0
8	karpacka-troja.com	13	0
9	krosno24.pl	13	0
10	google.ca	10	0
	Total	3393	

3393 out of 9756 visits contained a referer that could be evaluated. This analysis shows domains referring to your site. Subpages are summarized under the main domain.